

## Over View

---

RelocCAD 2002 is an add-on application to AutoCAD. This application will give the user the ability to design a RELOC installation drawing and generate a bill of material for projects.

The RelocCAD 2002 must have AutoCAD to run. RelocCAD 2002 has been tested with AutoCAD 2002 and 2004 versions only. It is possible RelocCAD 2002 could work with other AutoCAD versions.

RelocCAD **cannot** be used with AutoCAD LT versions. AutoCAD LT does not include the customization features that are required to run the application.

The RelocCAD application does not include “smart” product business rules. Business rules not included in the application are:

- ◆ Systems devices can be mixed  
i.e. Quick Flex and One Pass devices can be inserted together
- ◆ Voltages for devices can be mixed  
i.e. 277v Extenders can insert with 120v Fixture Cables.

Users of this application must have a good understanding of the RELOC systems. RelocCAD 2002 External version includes One Pass, Quick Flex and Specialty Lighting and Power systems.

Lithonia RELOC will not responsible for projects designed incorrectly. Product support is available by phone: Monday – Friday from 8am to 5pm EST 800.241.4750  
Product support is available by email: [ProductSupportReloc@AcuityBrands.com](mailto:ProductSupportReloc@AcuityBrands.com)

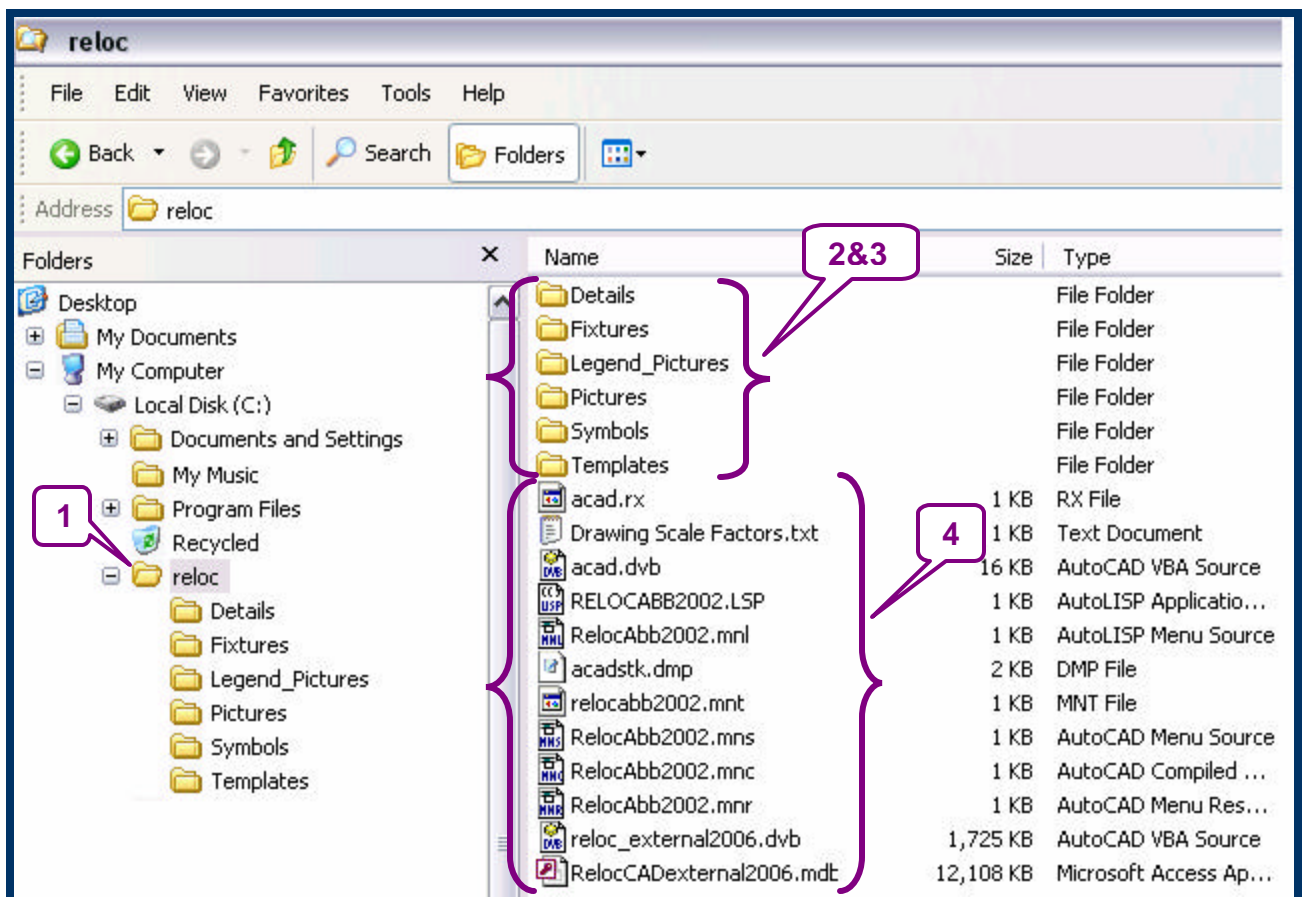
The RelocCAD project and menu must be loaded manually each time AutoCAD is opened. At this time, an auto-load feature is not available.

RelocCAD 2002 application pulls all of its information from the RelocCADexternal2006.mdb  
If an application requires other nomenclature options/customizations that do not show up in the fixture, cable or device forms, please contact:  
Product support by phone: Monday – Friday from 8am to 5pm EST 800.241.4750  
Product support by email: [ProductSupportReloc@AcuityBrands.com](mailto:ProductSupportReloc@AcuityBrands.com)

## RELOC Folder and File Placement

1. Create a folder named "reloc" in C:\
2. Create folders named: **Details, Fixtures, Legend\_Pictures, Pictures, Symbols and Template.** Place them in the "reloc" folder created in step 1.
3. Open the folder named "RelocCAD 2002 External Install". There will be WinZip files named: **Details, Fixtures, Legend\_Pictures, Pictures, Symbols and Template** Extract the contents to the appropriated folders created in step 2.
4. Extract the WinZip file named "root" to C:\reloc

Note: See illustration below for folder/file placements. Callouts represent steps out lined.

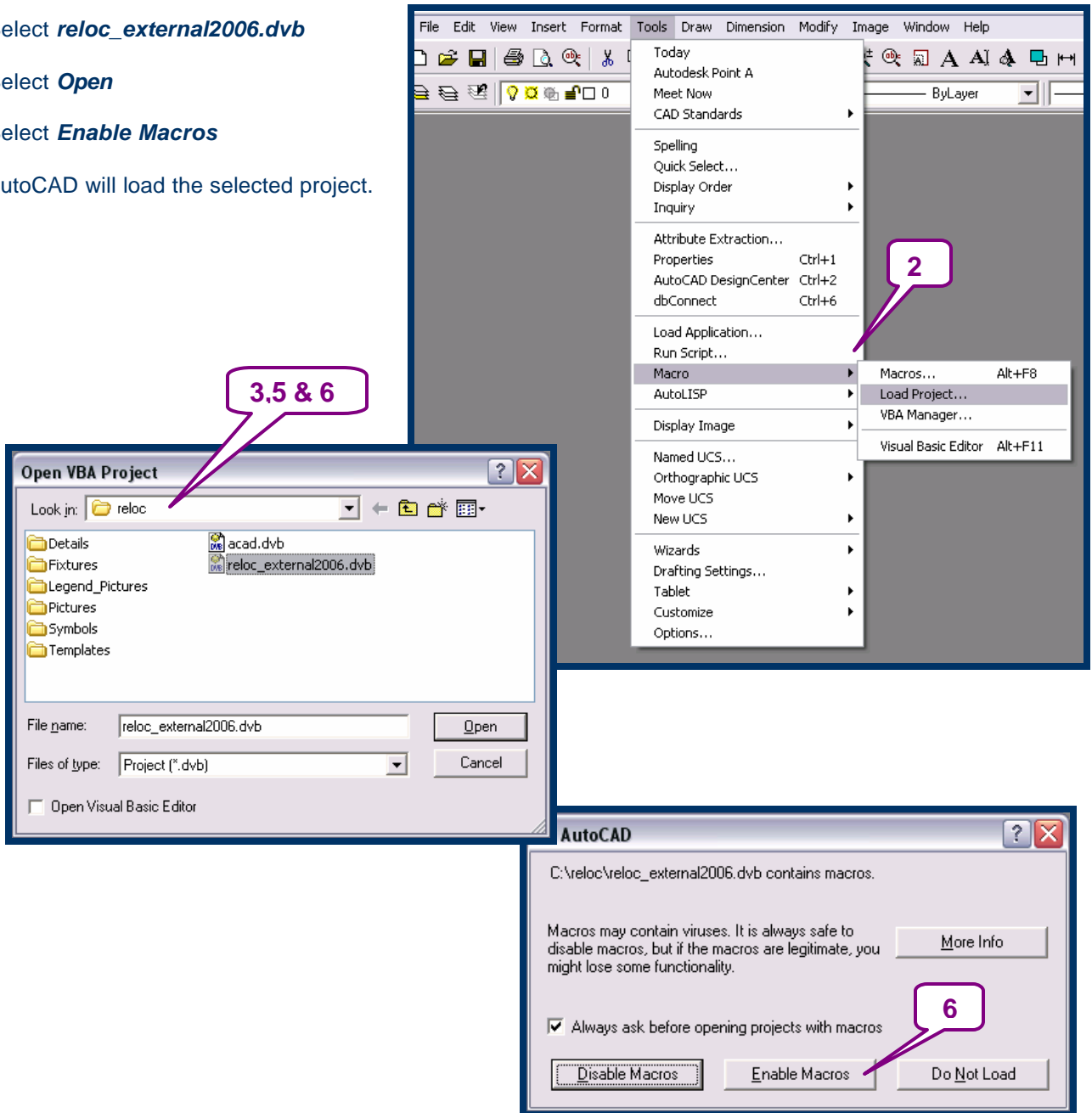


## How to Load RelocCAD 2002 Project

1. Open AutoCAD
2. Select Tools, Macro and Load Project
3. Browse to c: reloc
4. Select *reloc\_external2006.dvb*
5. Select *Open*
6. Select *Enable Macros*

AutoCAD will load the selected project.

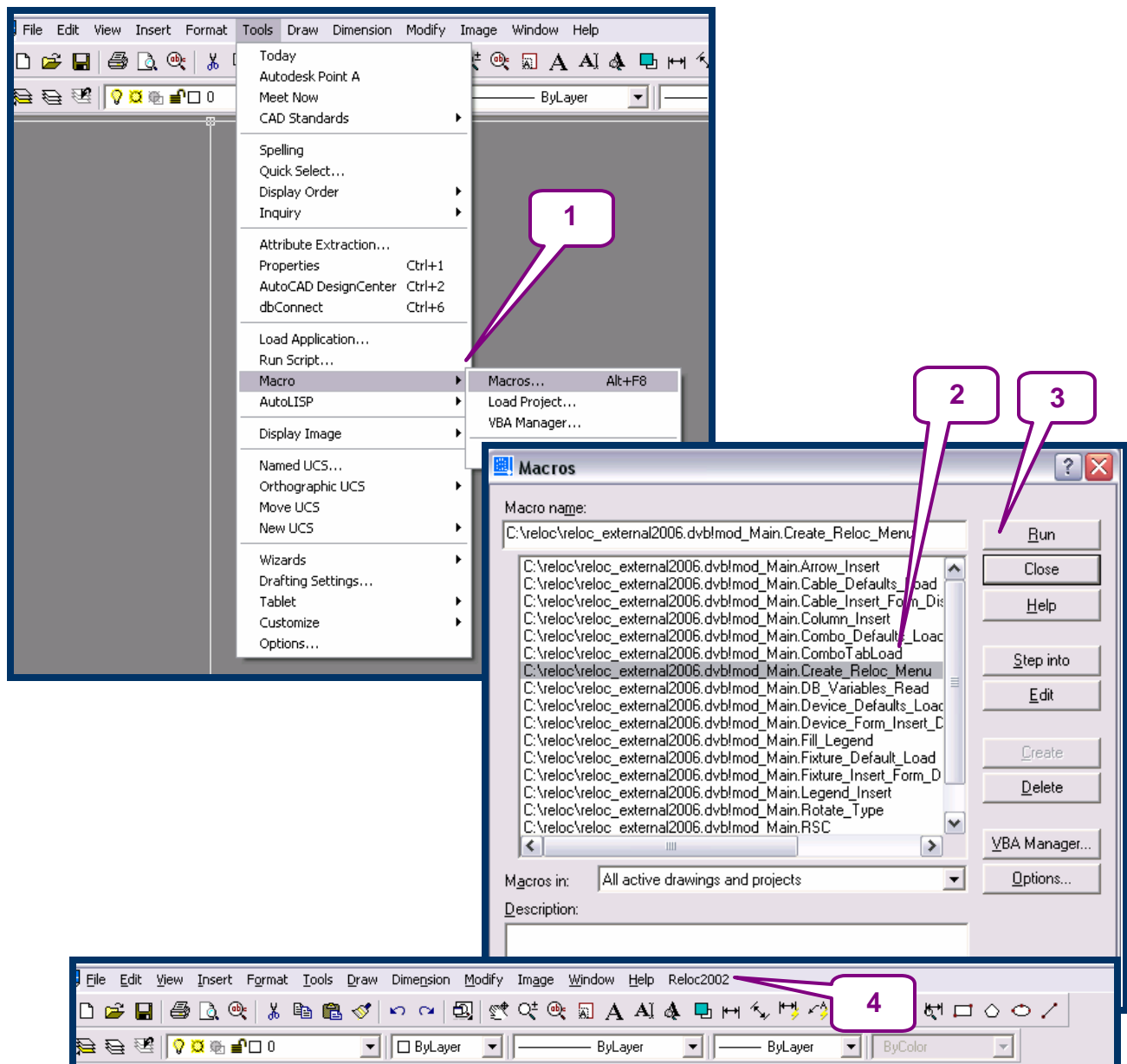
*Note: This step must be done each time AutoCAD is closed and re-opened.*



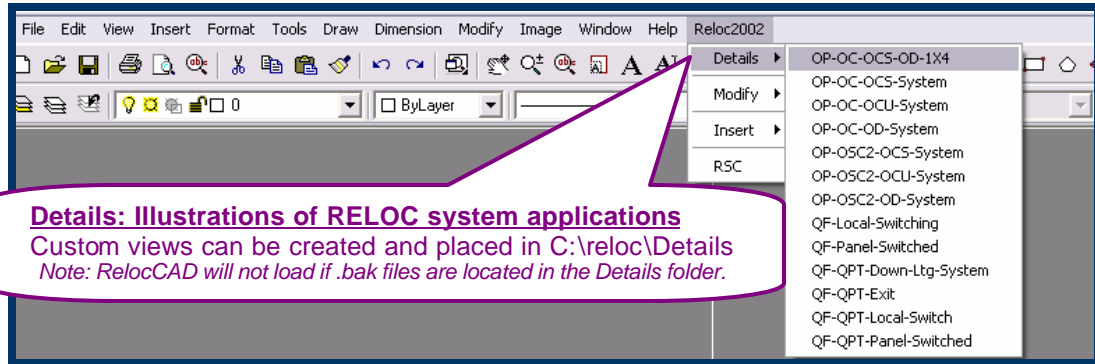
## How to Load the RelocCAD 2002 Menu

1. Select Tools, Macro and Macros...
2. From the Macros window, select Create\_Reloc\_Menu
3. Select Run
4. AutoCAD will load the RelocCAD 2002 menu.

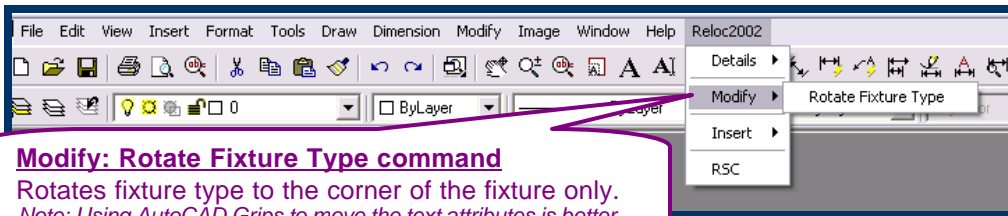
*Note: This step must be done each time AutoCAD is closed and opened.*



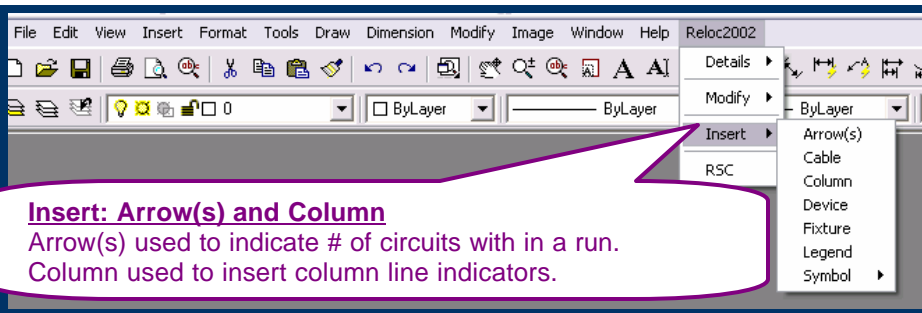
RelocCAD 2002 Menu Overview



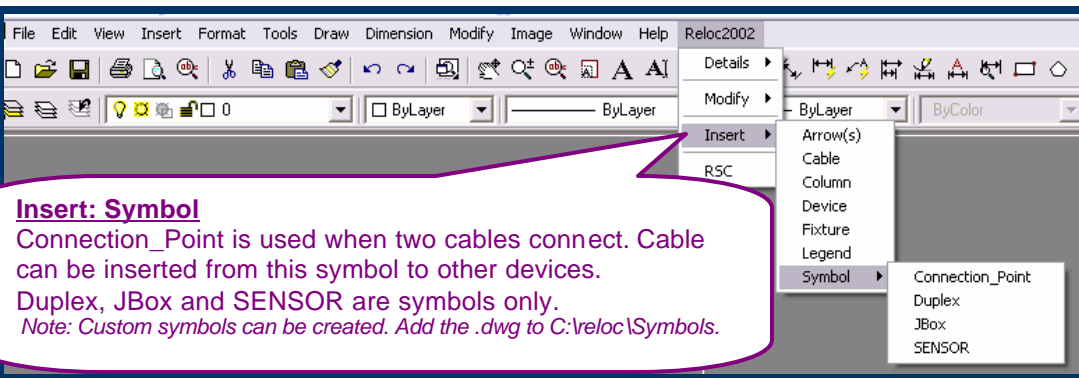
**Details: Illustrations of RELOC system applications**  
 Custom views can be created and placed in C:\reloc\Details  
 Note: RelocCAD will not load if .bak files are located in the Details folder.



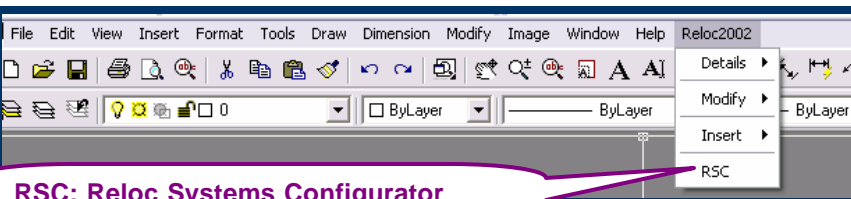
**Modify: Rotate Fixture Type command**  
 Rotates fixture type to the corner of the fixture only.  
 Note: Using AutoCAD Grips to move the text attributes is better.



**Insert: Arrow(s) and Column**  
 Arrow(s) used to indicate # of circuits with in a run.  
 Column used to insert column line indicators.



**Insert: Symbol**  
 Connection\_Point is used when two cables connect. Cable can be inserted from this symbol to other devices.  
 Duplex, JBox and SENSOR are symbols only.  
 Note: Custom symbols can be created. Add the .dwg to C:\reloc\Symbols.



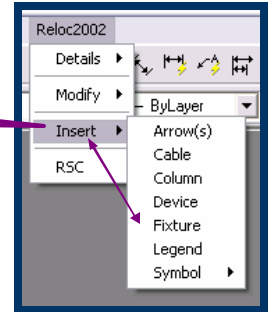
**RSC: Reloc Systems Configurator**  
 Not available with the external version

RelocCAD 2002 Insert Fixture Form Overview

The user must know what RELOC system to use and how the product is to be applied.

1. Select Insert and Fixture.
2. The Insert Fixture form will pop up.

1 & 2



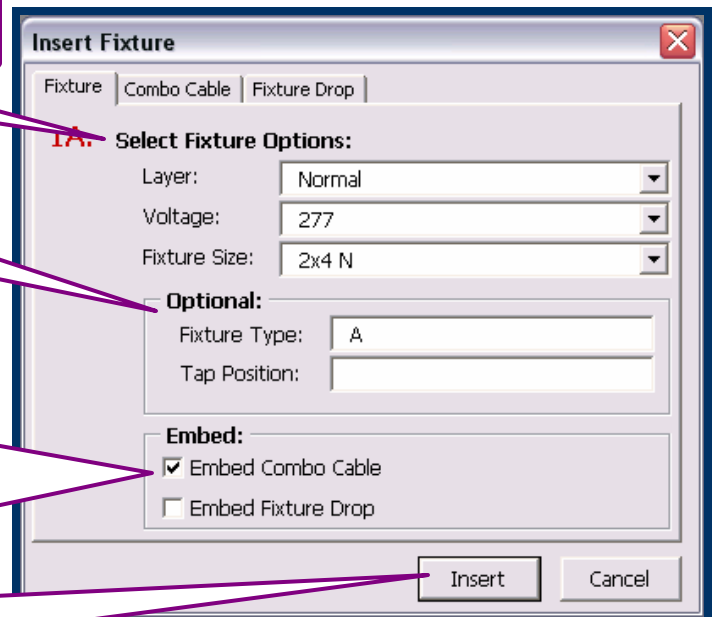
From this form, the user will determine how to build the fixture blocks for the project.

**Fixture Tab: Select Fixture Options**  
Select ACAD layer, Voltage and size of the fixture.  
*Note: "Layer" does not follow AutoCAD's layer properties.*

**Fixture Tab: Optional**  
Select Fixture Type and Tap Position as required.

**Fixture Tab: Embed**  
Select based on application:  
**Embed Combo Cable** – Attaches Combo Cable attribute/nomenclature to Fixture Block.  
**Embed Fixture Drop** – Attaches Fixture Drop attribute/nomenclature to Fixture Block.  
*Note: If fixture block requires a fixture drop, then the Embed Fixture Drop must be selected in order for the program to count it.*

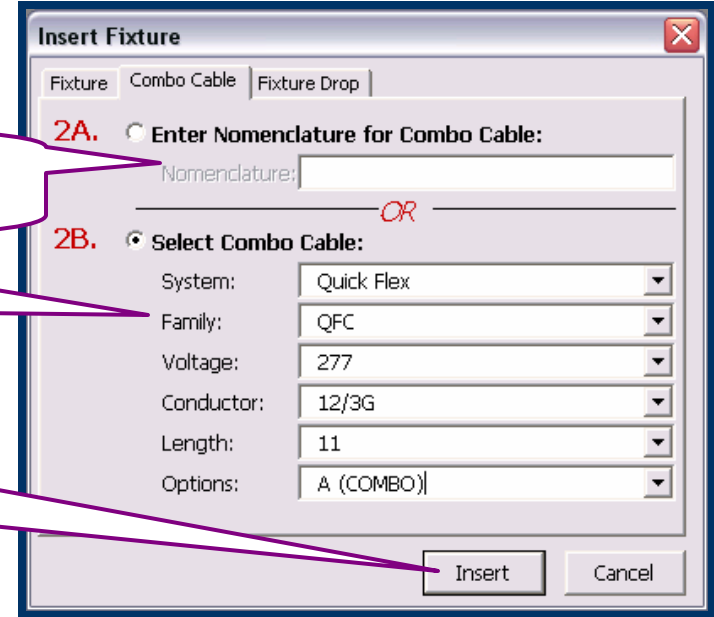
**Fixture Tab: Insert**  
Select insert here if you are ready to insert your fixture block. If not, go to the Combo Cable or Fixture Drop tab.



**Combo Cable Tab: Enter Nomenclature for Combo Cable**  
Enter complete nomenclature for Combo Cable.

**Combo Cable Tab: Select Combo Cable**  
Select the best Combo Cable for the application.

**Combo Cable Tab: Insert**  
Select insert here if you are ready to insert your fixture block. Make sure the Embed Combo Cable is selected on the Fixture Tab.



RelocCAD 2002 Insert Fixture Form Overview

**Fixture Tab: Select Fixture Options**

Select layer, Voltage and size of the fixture.

Note: "Layer" does not follow AutoCAD's layer properties.

**Fixture Tab: Optional**

Select Fixture Type and Tap Position as required.

**Fixture Tab: Embed**

Select based on application:

**Embed Combo Cable** – Attaches Combo Cable attribute/nomenclature to Fixture Block.

**Embed Fixture Drop** – Attaches Fixture Drop attribute/nomenclature to Fixture Block.

Note: If fixture block requires a fixture drop, then the Embed Fixture Drop must be selected in order for the program to count it.

**Fixture Tab: Insert**

Select insert here if you are ready to insert your fixture block. If not, go to the Combo Cable or Fixture Drop tab.

**Fixture Drop Tab: Enter Nomenclature for Fixture Drop**

Enter complete nomenclature for Fixture Drop or Select (3B)

**Fixture Drop Tab: Select Fixture Drop Cable**

Select the best Fixture Drop for the application.

**Fixture Drop Tab: Insert**

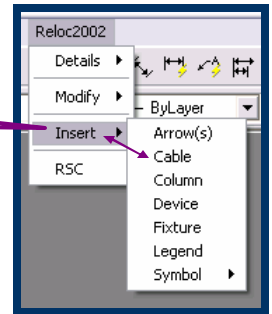
Select insert here if you are ready to insert your fixture block. Make sure the Embed Fixture Drop is selected on the Fixture Tab.

RelocCAD 2002 Insert Cable Form Overview

The user must know what RELOC system to use and how the product is to be applied.

1. Select Insert and Cable.
2. The Insert Cable form will pop up.

1 & 2



From this form, the user will determine how to build the cables for the project.

**Fixture Cable Tab: Enter Nomenclature for Fixture Cable**

Enter complete nomenclature for Fixture Cable or go to 1B

**Fixture Cable Tab: Select Fixture Cable**

Select best Fixture Cable for the FIELD installed application.  
*Note: If the application requires Combo Cables or Fixture Drops, this form is not required, By default, fixture cables will NOT be inserted to any block with Drop or Combo in the block.*

**Fixture Cable Tab: Optimize Length and Length**

Select the Optimize Length and select from the Options for the different Fixture Cable lengths required for the application. If one fixture cable length is required, select it from the Length pull down.

**Fixture Cable Tab: Options**

If Optimize is checked, select the different fixture cable

**Extender Cable Tab: Enter Nomenclature for Extender Cable**

Enter complete nomenclature for Extender or go to 2B

**Extender Cable Tab: Select Extender Cable**

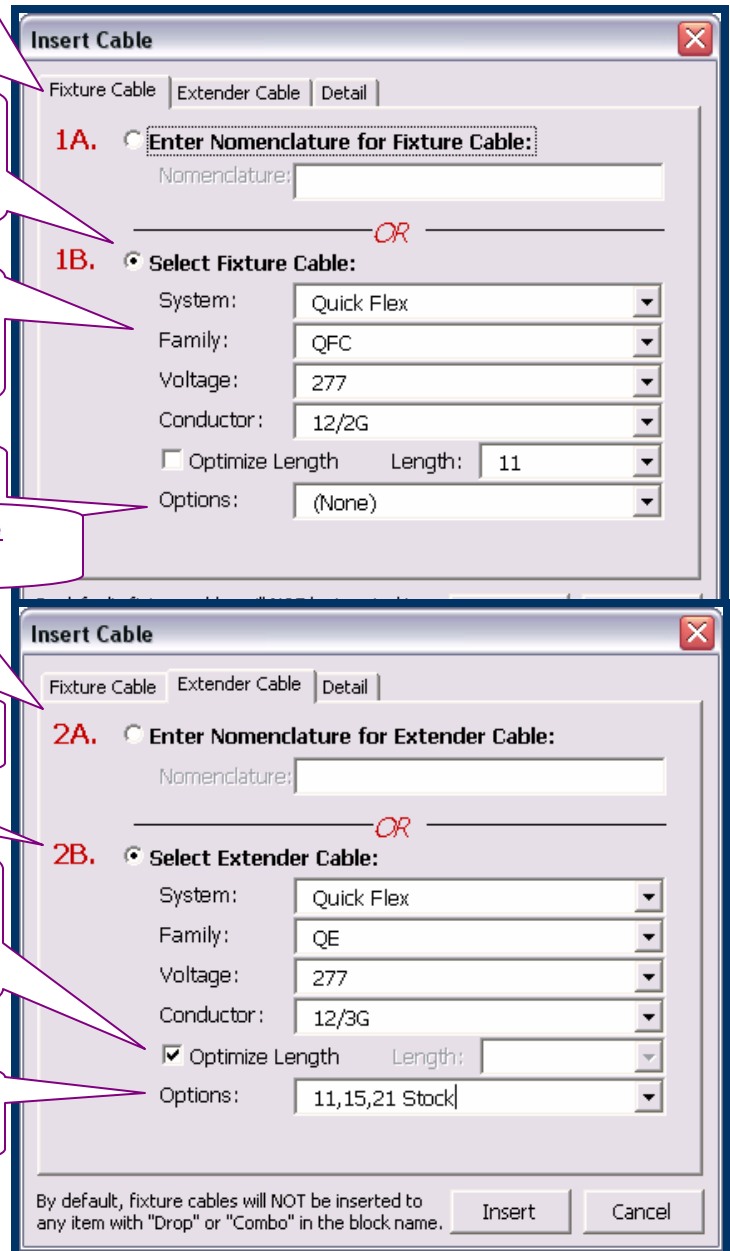
Select best Extender Cable for the FIELD application.

**Extender Cable Tab: Optimize Length and Length**

Select the Optimize Length and select from the Options for the different Extender Cable lengths required for the application. If one Extender cable length is required, select it from the Length pull down.

**Extender Cable Tab: Options**

If Optimize is checked, select the different fixture cable lengths required for the application.



RelocCAD 2002 Insert Cable Form Overview

**Detail Tab: Fixture Cable Tag**

If Fixture cable is field installed and Optimize is not checked, the option to change the insertion tag is given.

**Detail Tab: Layer**

Select layer

Note: "Layer" does not follow AutoCAD's layer properties.

**Detail Tab: Extender Cable Tag**

If Optimize is not checked, the option to change the insertion tag is given. S

**Detail Tab: Cable Type**

Select the cable type best for the application. This will determine how the cable will be inserted between fixtures and devices.

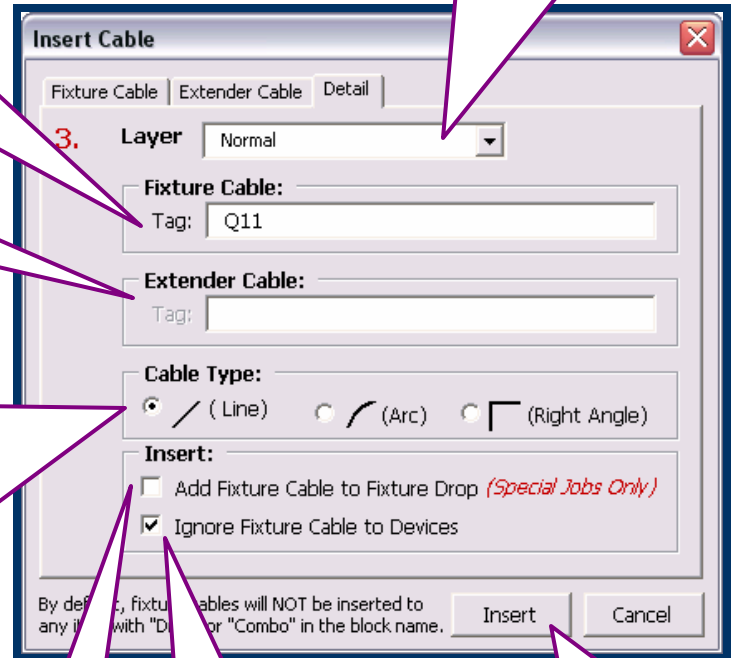
Line – Select point A and point B.

Arc – Select point A, point B and point C. C is the arc location.

Right Angle – Select point A, point B and point C. C is the direction the right angle will insert.

Note: Line and Arc measure from point A to point B.

Right Angle calculates right angle measurements and inserts cable lengths based on it. If an open ceiling application is required, right angle measurements are needed to calculate the amount of cable needed to go around bar joists.



**Detail Tab: Insert**

Select insert and begin selecting Fixtures/devices

**Detail Tab: Insert**

Ignore Fixture Cable to Devices MUST be checked at all times.

**Detail Tab: Insert**

Add Fixture Cable to Fixture Drop. System not available with External

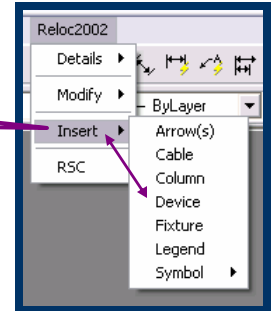
## RelocCAD 2002 Insert Device Form Overview

The user must know what RELOC system to use and how the product is to be applied.

1. Select Insert and Cable.
2. The Insert Device form will pop up.

From this form, the user will determine how to build the cables for the project.

1 & 2



**Device Insert: Select Device**  
Select best Device for the application.

**Device Insert: Enter Nomenclature for Device**  
Enter complete nomenclature for Device or go to 1B

**Device Insert: Layer**  
Select layer  
*Note: "Layer" does not follow AutoCAD's layer properties*

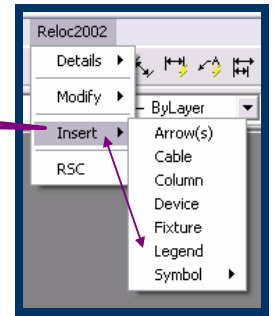
A screenshot of the 'Device Insert' dialog box. It has two main sections: '1A. Enter Nomenclature for Device:' with a text field and '1B. Select Device:' with several dropdown menus. The '1B' section includes: System (Quick Flex), Family (QC), Voltage (277), Conductor (12/3G), Length (empty), and Options (Stock). At the bottom, there is a '2. Layer' dropdown set to 'Normal' and 'Insert' and 'Cancel' buttons.

**Device Insert: Insert**  
Select insert and place device on the drawing.

RelocCAD 2002 Insert Legend Overview

The user must know what RELOC system to use and how the product is to be applied.

1. Select Insert and legend .
2. Follow the options shown on the command line.



The command will insert a detailed legend and generates a bill of material for the project.  
*Note: The Legend does not always insert to scale. Manual scaling will be required.*

	<b>QFC</b> Quick Flex Combo Fixture Cable	
LEGEND PICTURE	NOMENCLATURE	QUANTITY
	QFC277 12/2G11A (COMBO)	3
	<b>QE</b> Quick Flex Extender Cable	
LEGEND PICTURE	NOMENCLATURE	QUANTITY
	QE277 12/3G11 M10	4
	<b>QFC</b> Quick Flex Fixture Cable	
LEGEND PICTURE	NOMENCLATURE	QUANTITY
	QFC277 12/3G11 M10	3

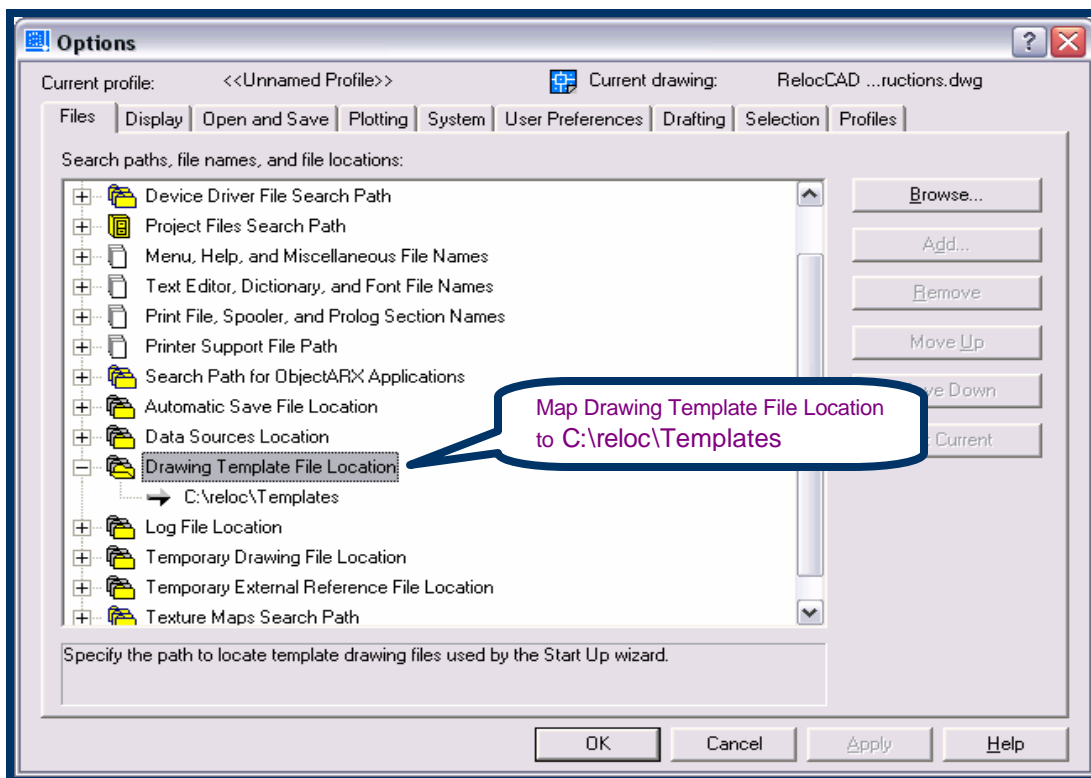
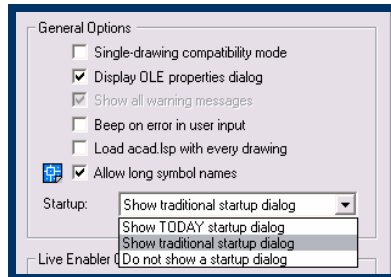
	<b>OCS</b> One Pass Cord Selectable	
LEGEND PICTURE	NOMENCLATURE	QUANTITY
	OCS 480 05 WH M35	4
	<b>OCU</b> One Pass Cord Unselectable	
LEGEND PICTURE	NOMENCLATURE	QUANTITY
	OCU 480 TAP34 05 WH M35	1
	<b>OC</b> One Pass Converter	
LEGEND PICTURE	NOMENCLATURE	QUANTITY
	OC 480 12/4G M10	1

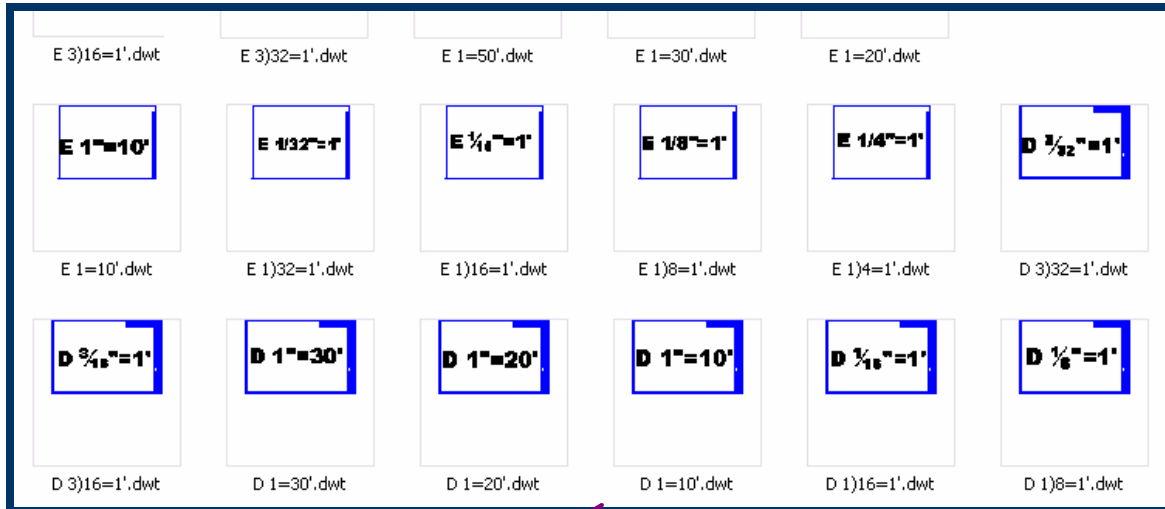
## RelocCAD 2002 Template Overview

Scaled template files are pre-set.

To use the pre-set .dwt files map to the folder and use them at drawing start up.

This can be set in the Options menu in the System tab.





Template files with Reloc Title Blocks